



User Manual

**Galaxy
Stroller**

18257 18258
18259 18260



Please scan the QR for video link



Assembly video



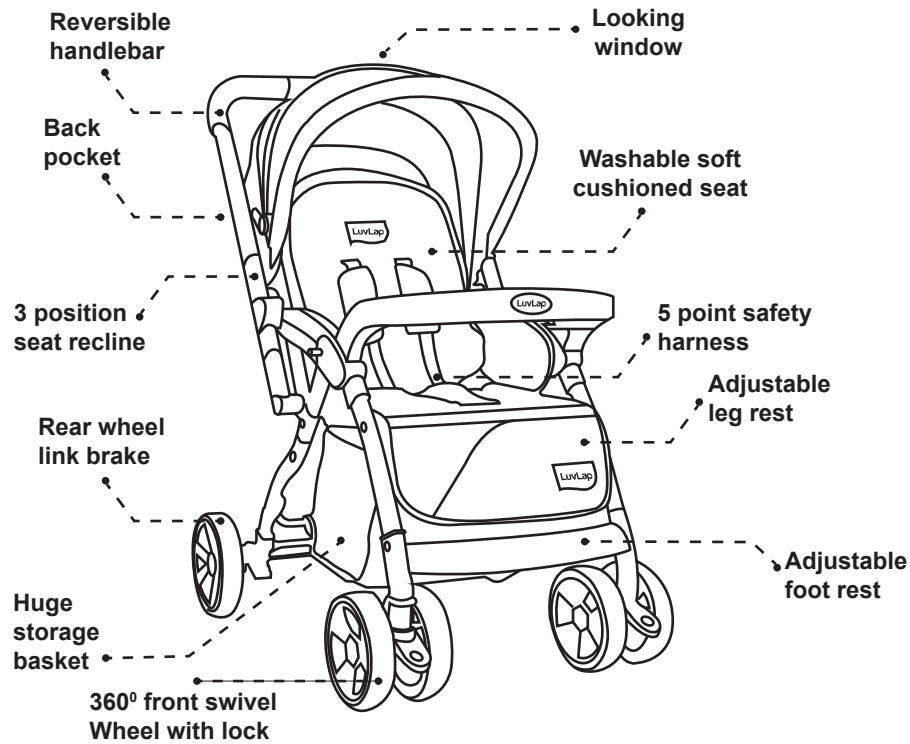
Feature video

Please keep the product leaflet for future reference

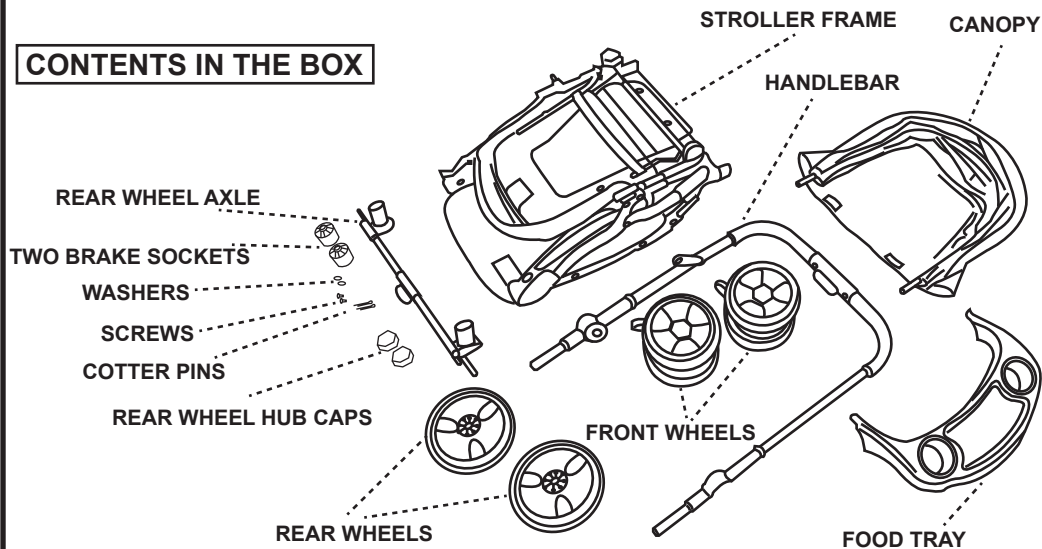
In case of a complaint contact our customer care executive at :

☎ 18001207897 or email: ✉ info@uclindia.com 🌐 www.luvlap.com

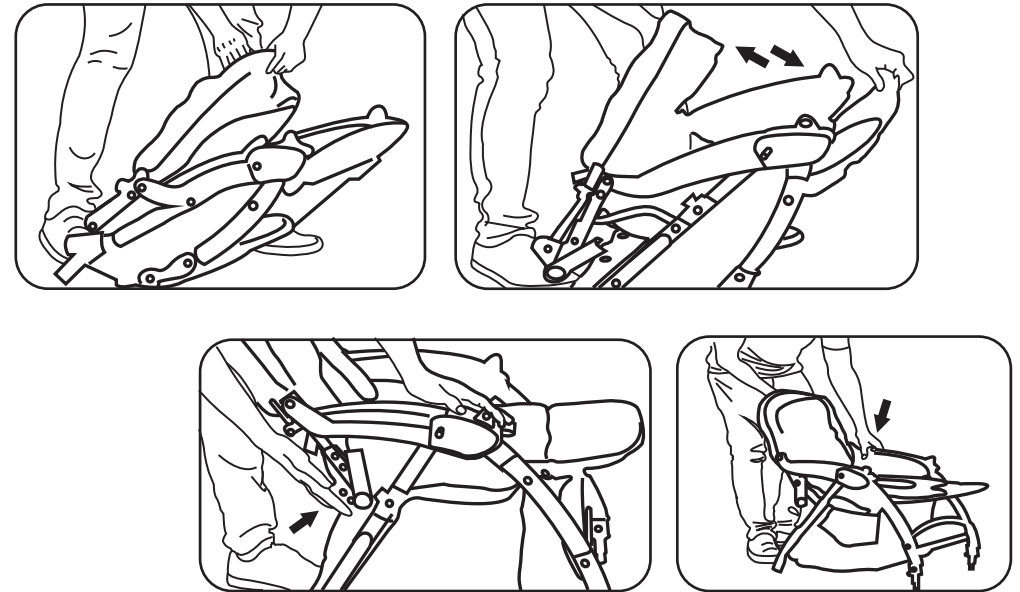
Product Features and Parts



CONTENTS IN THE BOX

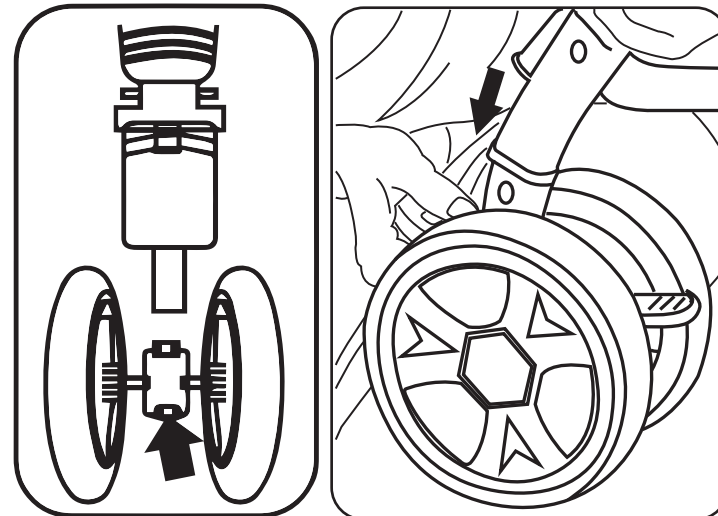


Assembly of Stroller



Open the stroller by grasping the backrest and front stroller frame. Stretch and open the stroller and lock it on both sides of the rear legs of the stroller until a "click" is heard.

The assembly of front Wheel

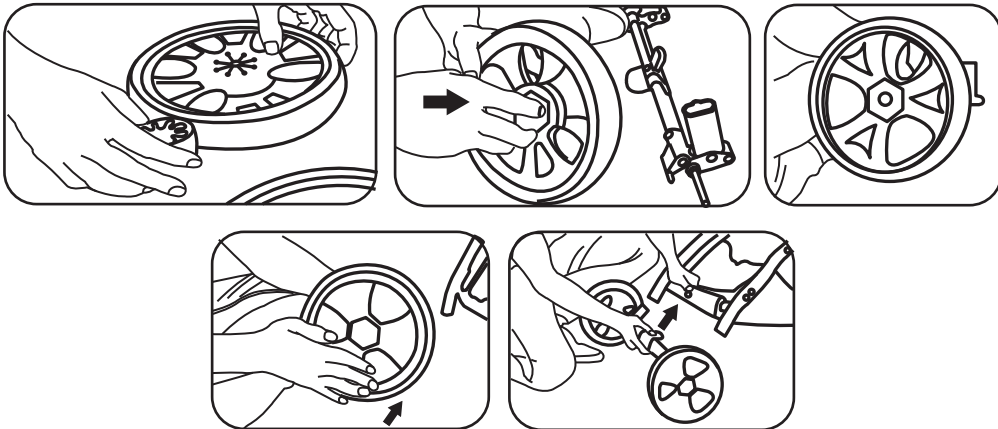


Install the front wheel by pulling the lever up and insert into the socket provided in the front wheel by keeping the locks facing the front. A "Click" would indicate proper insertion of the lever into the front wheel.

Assembly of Stroller

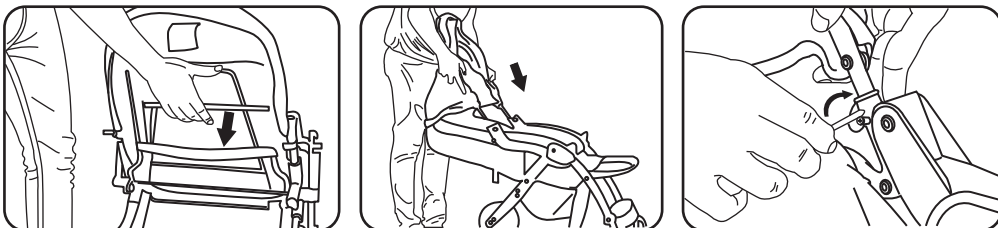
The assembly of Rear Wheel

- Insert the rear wheel into the rear wheel axle
- First place the brake socket in the slots provided
- Then fit the wheel to the axle rod
- Then put the washer
- Secure the wheel with a cotter pin and place the hub Cap
- Do the same to the other and complete the rear wheel axle
- Attach the assembled rear wheel axle to the stroller frame with the center lock knob facing back



Attaching the Canopy

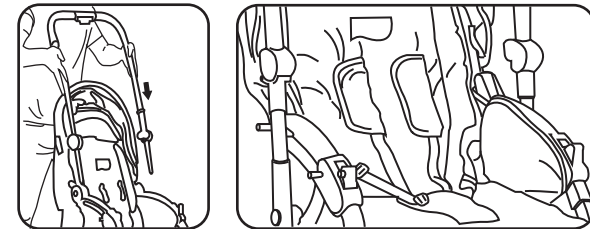
- Recline the backrest and attach the canopy by inserting it into the slot on either side of the stroller
- Secure the canopy with screws on both sides
- Pull the canopy forward
- Straighten the bars on both sides to fix the canopy



Assembly of Stroller

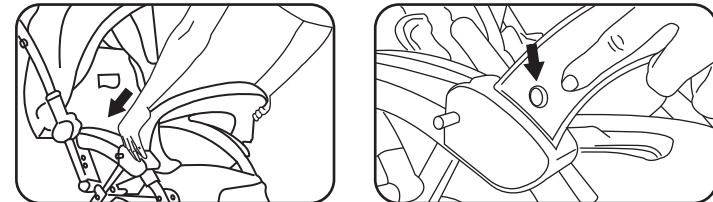
Attaching the Handlebar

Attach the handlebar by inserting its two ends in the plastic projected slots on either side of the stroller.



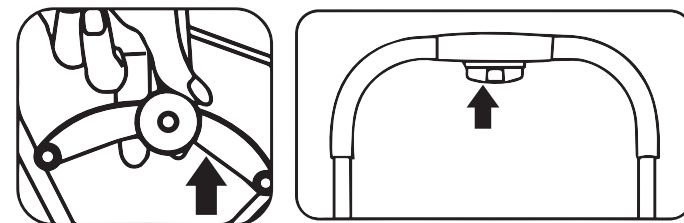
Attaching the Food Tray

- Attach the handlebar by inserting its two ends in the plastic projected slots on either side of the stroller.

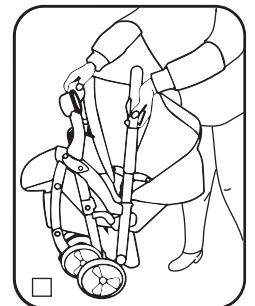


Folding the Stroller

- Pull up the canopy stretcher to fold the canopy
- Press down the second locker (picture shows), and hold the folding button by hand can open the lock



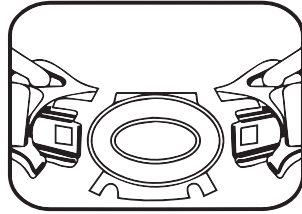
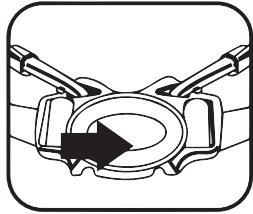
- As shown in the picture, one hand holds the handle, the other hand holds the stroller, press inside together till the hook is locked, the stroller is folded



Some Important Features

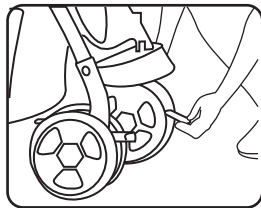
5 Point Harness

- The 5 Point harness secures the infant in the stroller.
- Two straps of the harness are located on the shoulders, Two on the waistline and one at the crotch.
- There is one single buckle at the end of the crotch strap with which the shoulder and waist strap inserts connect.
- On either side the shoulder strap and Waist straps have pattern matched inserts. These are to be inserted in the buckle till a click is heard.

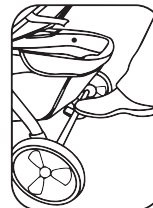
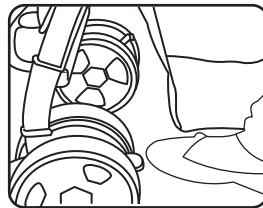


Brakes

- There is swivel brake in the front side of front wheels are to restrict the front wheel movement in a straight line
- To stop the stroller push the lever downwards in both front and rear wheel



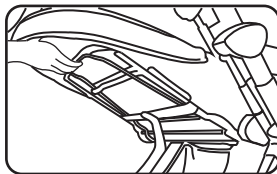
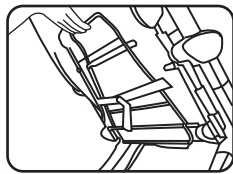
Swivel
brake



Front
and
Back
wheel
brake

3 Position Adjustable Recline

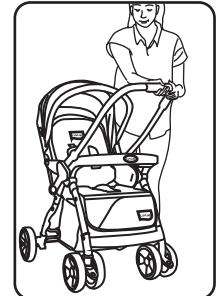
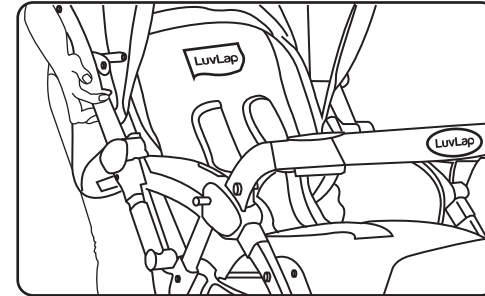
- The backrest can be adjusted to 3 recline positions (sitting, resting and sleeping) by pulling up the wire behind backrest



Some Important Features

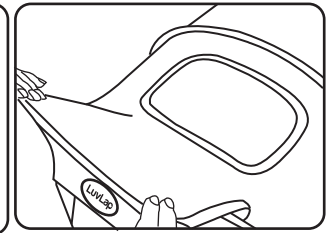
Reversible Handlebar

- The handlebar of Galaxy Stroller can be adjusted to different positions by pulling the knobs on both sides simultaneously for either forward or backward facing stroll.



Extendable and Adjustable Canopy

- The canopy can be adjustable between fully folded to fully expanded. While expanded it can be secured with locks provided on both sides. There is a looking window to keep a watch on the baby.



Adjustable Footrest

- The footrest can be adjusted in two different positions by pulling the knobs provided at both ends of the footrest simultaneously and rotating it

